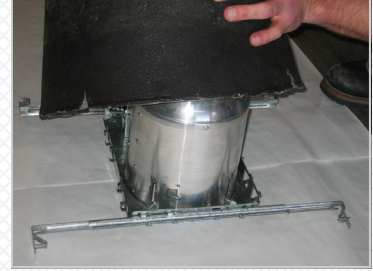




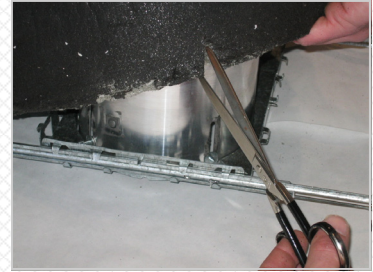
#### Step 1

Hanger bars of the light fixture shall be screwed to the joists in addition to the tabs being hammered into the joists, following the light manufacturer's installation instruction.



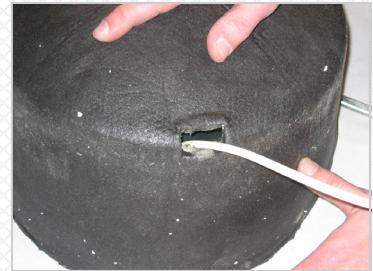
#### Step 2

Place Tenmat FF109 cover over the fixture.  
Slit the cover to fit over the hanger bars of the fixture.  
Cut four slits with a size up to 1" max.



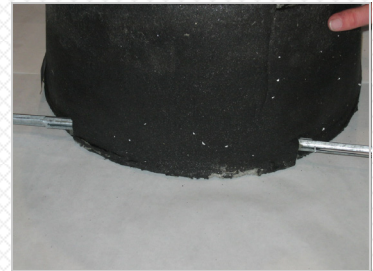
#### Step 3

The wire can be fed through one of the cover vent holes located at the top.  
Follow the light manufacturer instructions to make proper connections.



#### Step 4

Put the cover on top of the fixture. Check for secure fit, and make sure the cover overhangs the hanger bars.  
The FF 109 Light Cover must fit flush with the back surface of the drywall board.



CLASSIFIED FOR FIRE RESISTANCE  
FIRE RESISTANCE CLASSIFICATION  
SEE UL FIRE RESISTANCE DIRECTORY



Type FF109 Fire Rated Recessed Light Cover luminaire enclosure for use over UL Listed IC-rated recessed incandescent and fluorescent luminaires with housing 6-7/8 in. max. diam, 6-7/8 in. max. height (as measured from top of base), made from aluminum or painted or galv steel. Luminaires supported on a base 7-7/8 in. by 10-3/4 in. max., made from painted or galv steel and screw-attached to the fixture with min. three screws. Each luminaire with trim and lens weighs 3.8 lb max. Luminaire enclosure and luminaire installed in accordance with the accompanying instructions. Luminaire enclosure and luminaire for use in 1 hr fire rated L500-Series Floor-Ceiling designs having solid wood joists or open-web wood trusses on max 16 in. centers, wood flooring and a min 1/2 in. thick gypsum board ceiling. Number of luminaires not to exceed the ratio of one per 25 sq ft of total ceiling area with min separation of 3 ft between luminaires.